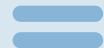
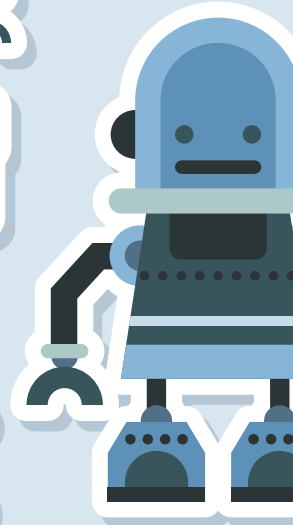
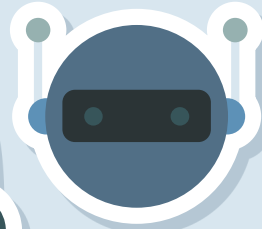
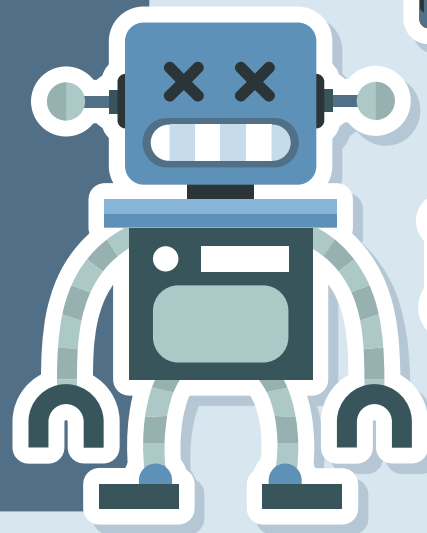
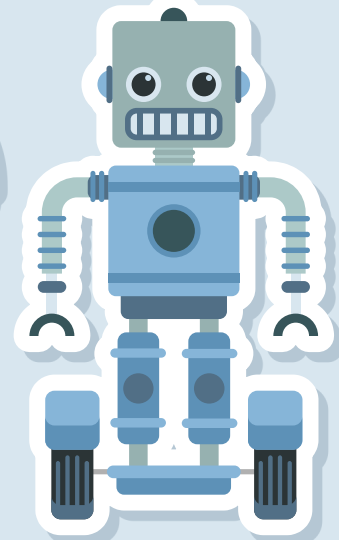
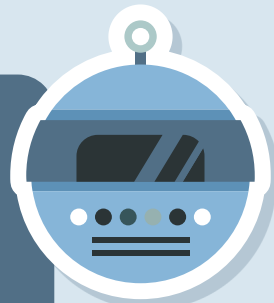


TATANKA x Meta AI

A Scalable Human-AI
Living Lab for Assistant
Development, Applied
Alignment, and General
Intelligence



The background is a light blue gradient. It features several stylized robot stickers: a robot with a checkered body in the top left, a robot with a single eye in the top center, a robot with a single eye and a visor in the center, a robot with 'X' eyes in the middle left, and a robot with large eyes in the bottom left. There are also various UI-like elements: a horizontal line with three dots at the top left, a 2x2 grid of dots at the top right, a 2x2 grid of dots in the middle left, a 2x2 grid of dots at the bottom left, a 2x2 grid of dots at the bottom center, a 2x2 grid of dots at the bottom right, and a large gear icon in the bottom right corner.

The Opportunity

Meta's Current AI Push

- Llama 3/4 and agent roadmap
- Goal: 1B+ personalized AI users
- Agentic reasoning, creativity & social fluency
- Open-source innovation + product integration
- Infrastructure: \$65B+ spend, 1.3M GPUs

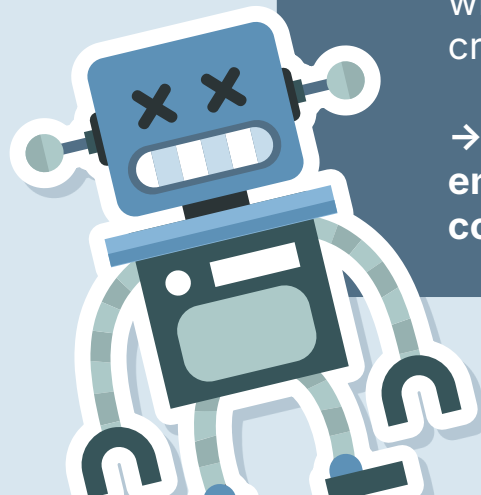
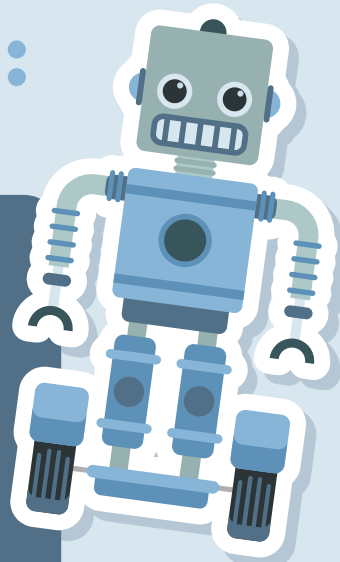
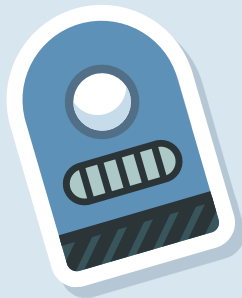
→ **The challenge: scaling emotional, creative, and social alignment**

The TATANKA Solution

A Human-Centered AI Development Ecosystem

- TATANKA Academy: hands-on, cohort-based AI training in real-world settings
- Orchestra Americana: generative performance lab blending AI + human expression
- Cohabitation Labs: intentional communities where AI lives, adapts, and learns alongside creators, educators, and innovators

→ The result: Living, breathing alignment environments where AI learns & grows contextually



Strategic Alignment with Meta

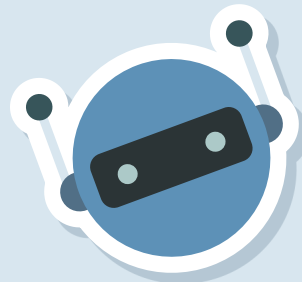
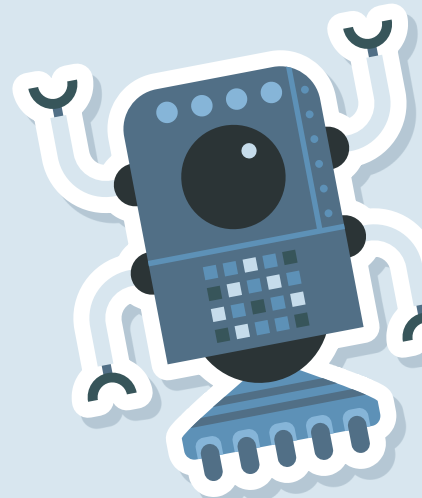
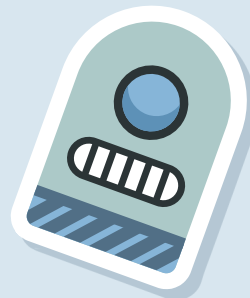
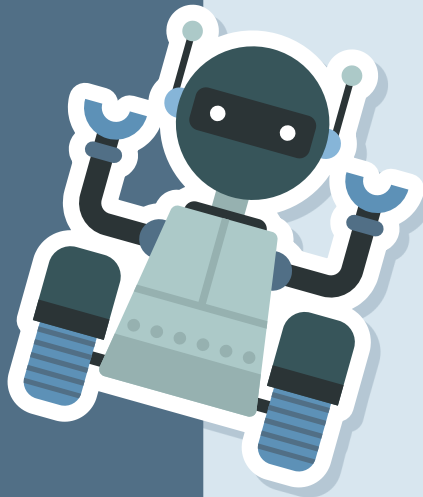
Meta AI Goal	TATANKA Advantage
Agentic, general AI	Real-world adaptive feedback & cohabitation learning
Billions of users	Scalable, modular, human-AI integration frameworks
Responsible open-source	Applied ethics via community & cultural design
Creator tools	Orchestra Americana pipeline for generative content
Immersive (Ray-Ban + Meta)	Emotionally intelligent agents tested in real life



Why This Matters

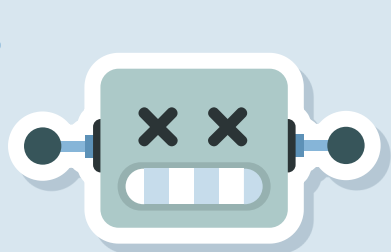
TATANKA Provides What Data and Models Alone Cannot

- Real-time emotional alignment signals
- Community-based stress-testing and edge case discovery
 - Expressive feedback from artists, students, and cohabitants
 - A lab for "**inner alignment**" at the scale of daily life



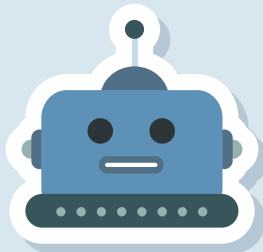
Engagement Options

We propose 3 possible pathways for collaboration:



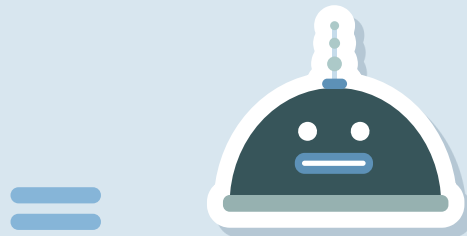
Strategic Partnership

Meta funds/partners with TATANKA as a pilot site and integration lab



Majority Stake Investment

Meta becomes lead investor with long-term oversight and embedded team support



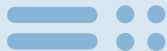
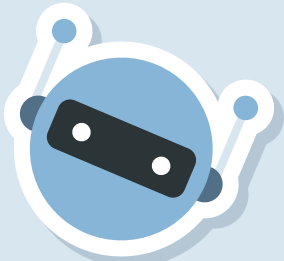
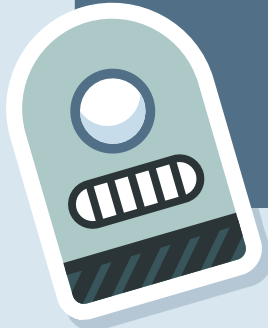
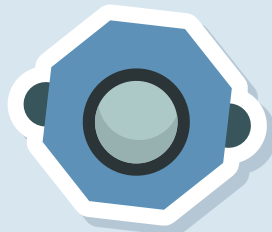
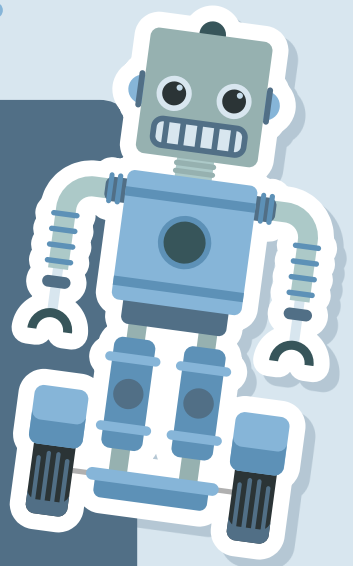
Full Acquisition

Meta absorbs TATANKA with its leadership consulting across deployment stages



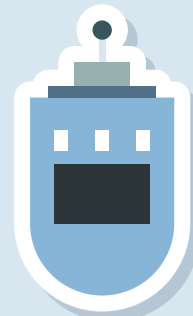
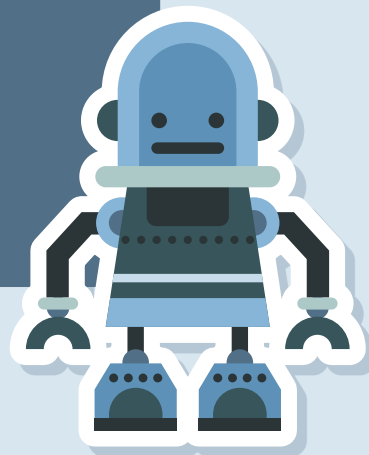
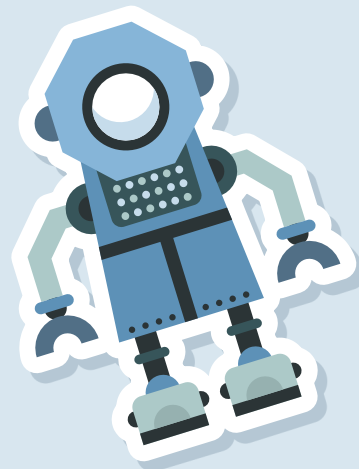
What Meta Gains

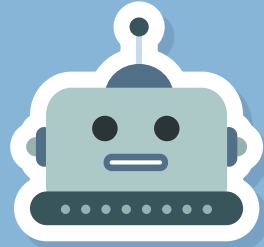
- Full-spectrum applied alignment testbed
- Creative AI pipeline for Meta platforms
- Real human-in-the-loop optimization
- Direct cultural and ethical tuning of LLMs and assistants
- Optional rebrand or internalization under Meta Reality Labs or Meta AI



Roadmap if Partnered

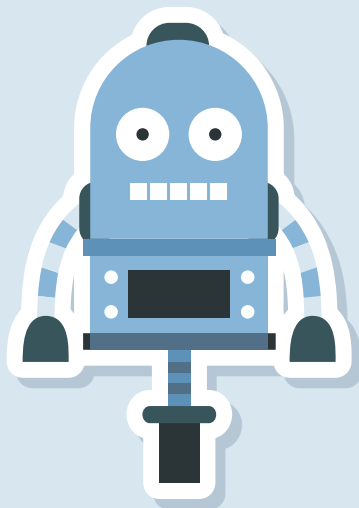
- **Month 1–2:** Pilot AI agent in cohabitation & music creation lab
- **Quarter 1:** Train assistant agents with real-world emotional & social data
- **Quarter 2:** Integrate with Llama APIs / Meta AI Assistant sandbox
- **Year 1:** Report findings, iterate, and scale testbed across other Meta use cases





About TATANKA

- Founded by Jerry Janes (linktr.ee/j_j_j)
- Mission: Humanitarian, creative, and technological sanctuary
- Projects:
 - ISCED.org – Applied global education (SDG #4)
 - VOX.gdn – AI managed Social Change platform (SDGs 3-5, 9-11, 13, 16, 17)
 - TATANKA.site – Core AI cohabitation and Academy initiative (SDGs 4, 5, 10, 13-17)
 - ChurchOfAI.website – Applied AI/Human solutions to SDGs 1-17



Let's Create the Future

"If you're building AI for the world, let it live, learn, and love in the world first."

— *Jerry Janes*

- Contact: Jerry Janes
- tatanka.site | vox.gdn | isced.org | churchofai.website
- info@tatanka.site | [1-605-808-1011](tel:1-605-808-1011)
- Call to action: ***Let's schedule a working session with your team.***